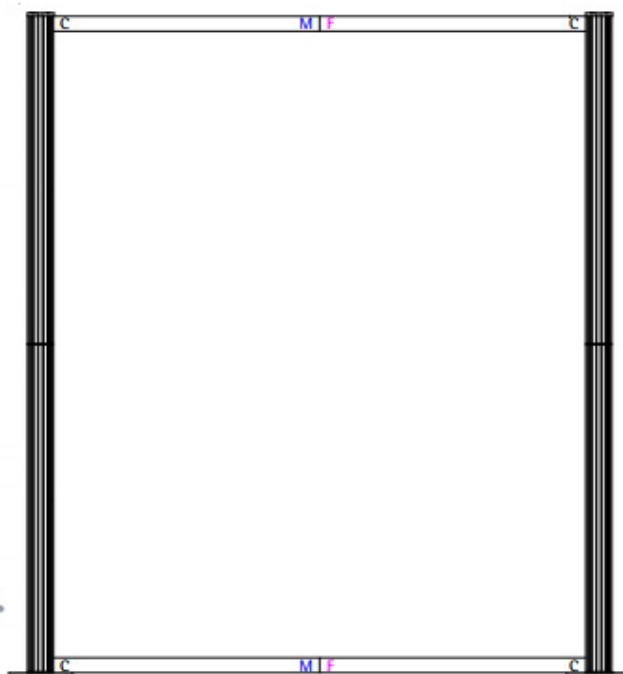


## Centro 1- "W750mm" Assembly-Instructions

### Centro 1 (Modular Exhibition Display)

#### Components:

2x Base Plates  
2x (Male) Connecting Posts at 1000mm  
2x (Female) Connecting Posts at 1000mm  
2x Straight Profile - 750mm Crossbars  
2x Acrylic Post End Caps



#### (Graphics Not Supplied)

Action 1 = Can support Rigid Panels

Action 2 = PVC Banner (Taped Pockets)

Action 3 = PVC Banner (Sewn Pockets)

#### Action 1 = Rigid Panels

W766mm x H1926mm  
(Finished Print / Cut Size)

W750mm x H1910mm  
(Visible Graphic Area)

#### Action 2 = PVC Banner (Taped Pockets)

W750mm x H2204mm  
(Finished Print / Cut Size)

W750mm x H1965mm  
(Visible Graphic Area)

#### Action 3 = PVC Banner (Sewn Pockets)

W750mm x H2154mm  
(Finished Print / Cut Size)

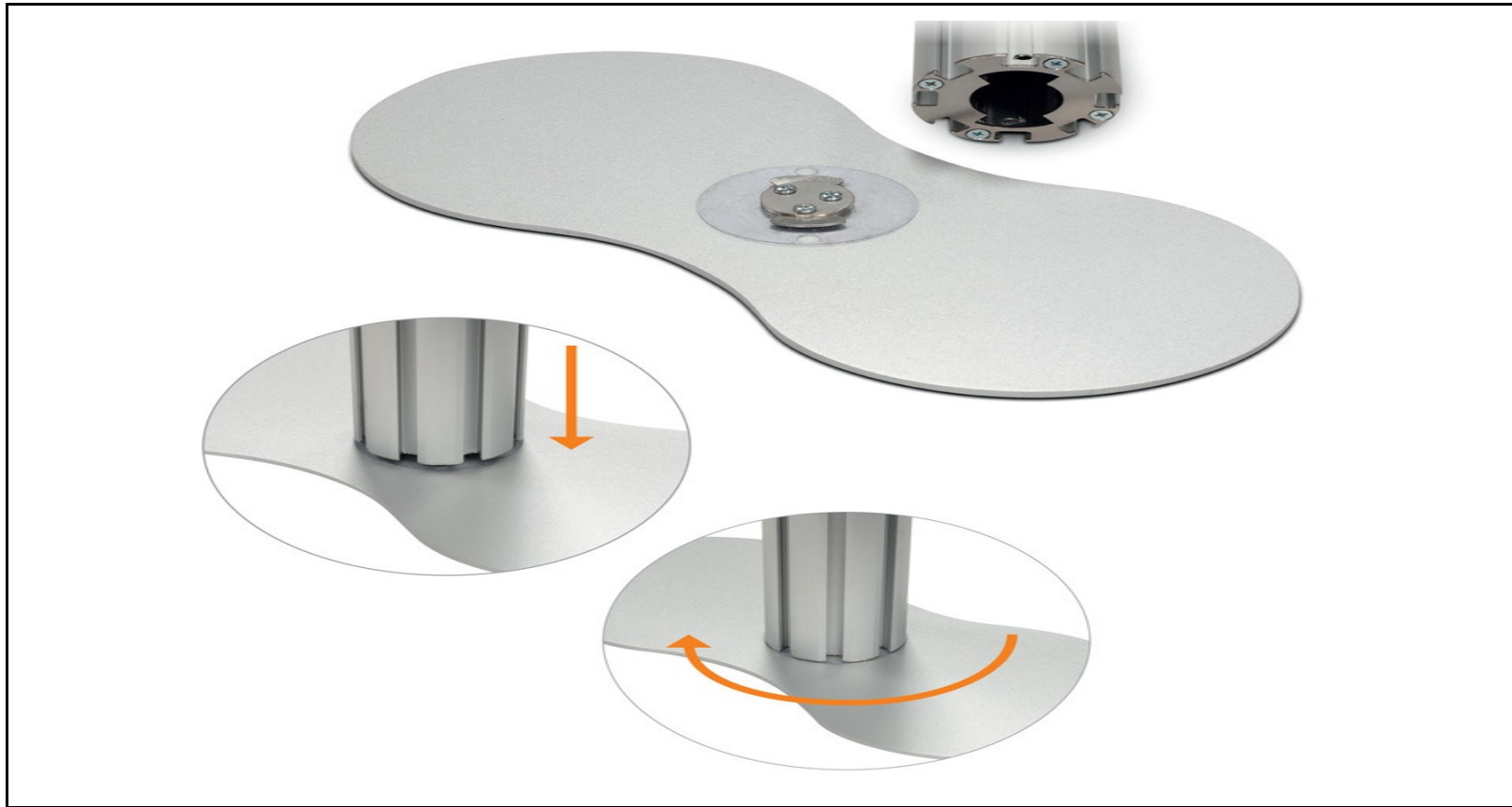
W750mm x H1965mm  
(Visible Graphic Area)

## Centro 1- "W750mm" Assembly-Instructions

### Centro 1 (Modular Exhibition Display)

#### Step 1 - Assembly

1. Place "Base Plates" onto the floor
2. Push down 1x Post onto the base plate connector
3. Twist clockwise to lock into place
4. Repeat 1-2-3 for 2nd Base Plate and Post



## Centro 1- "W750mm" Assembly-Instructions

### Centro 1 (Modular Exhibition Display)

#### Step 2 - Assembly

1. Affix Upper Post to Lower Posts
2. Push down Upper Post into Lower Post
3. Twist clockwise to lock into place
4. Repeat 1-2-3 for 2nd Base Plate and Post



## Centro 1- "W750mm" Assembly-Instructions

### Centro 1 (Modular Exhibition Display)

#### Step 3 - Assembly

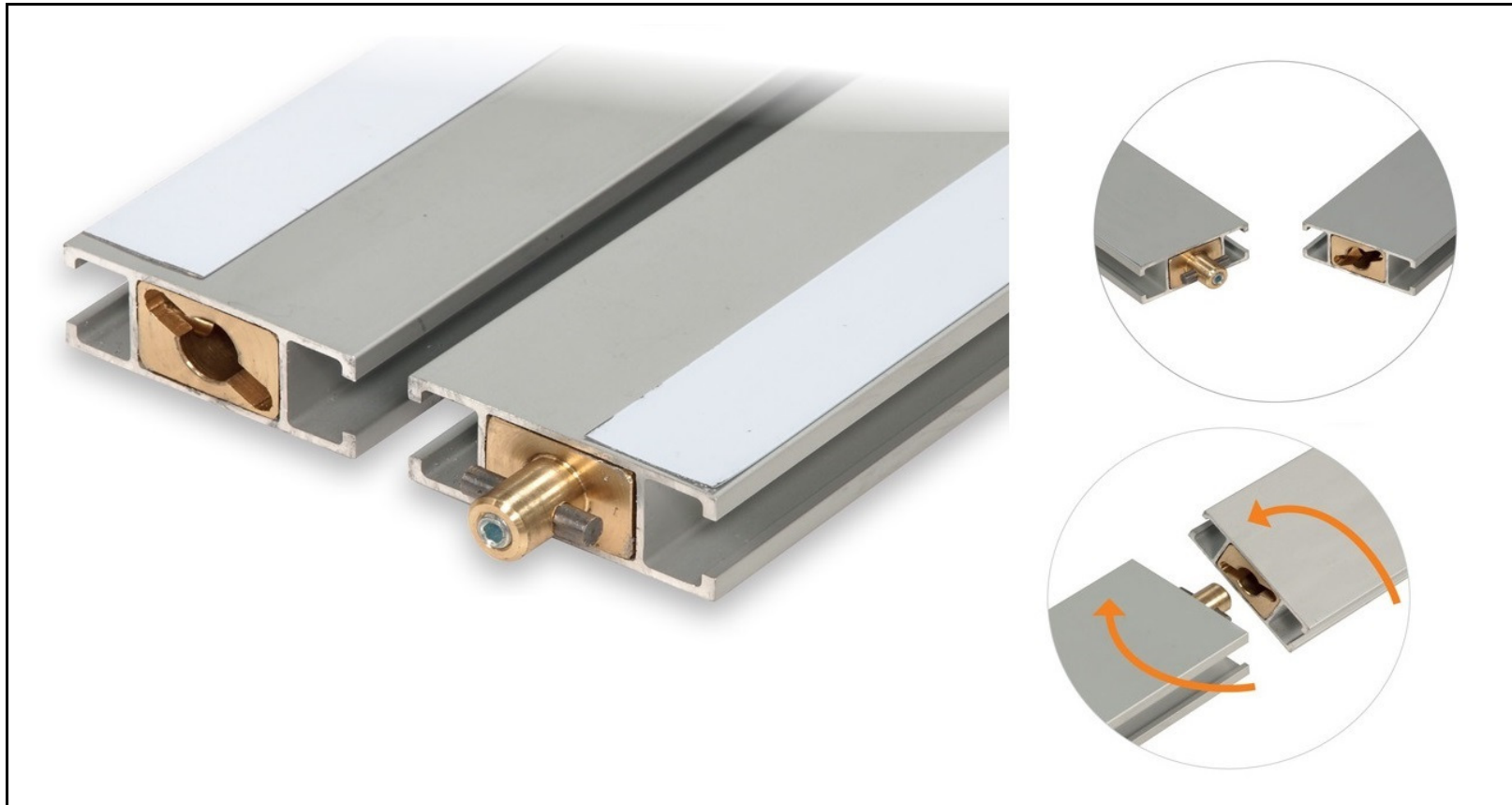
1. Connect the bottom crossbar
1. Connect the top crossbar

#### PVC Banners

Follow "Step 4" (next Page)

#### Rigid Banners

Follow "Step 5" (next Page)



## Centro 1- "W750mm" Assembly-Instructions

### Centro 1 (Modular Exhibition Display)

#### Step 4 - PVC Banners

1. Slot clamps into the posts (bottom and top)
2. Introduce the Horizontal crossbars + secure to slot clamps
3. Connect your PVC Banners (additional tape maybe required)
4. If you also require PVC Banner - We can help, additional costs)



### Centro 1 (Modular Exhibition Display)

#### Step 5 - Rigid Banners

1. Add "Slot clamps to the bottom of the post
2. Secure Horizontal Crossbars to each clamp
3. Add your rigid banner into the crossbar channel
4. Add top clamp and crossbars, slide into top of rigid Banner

